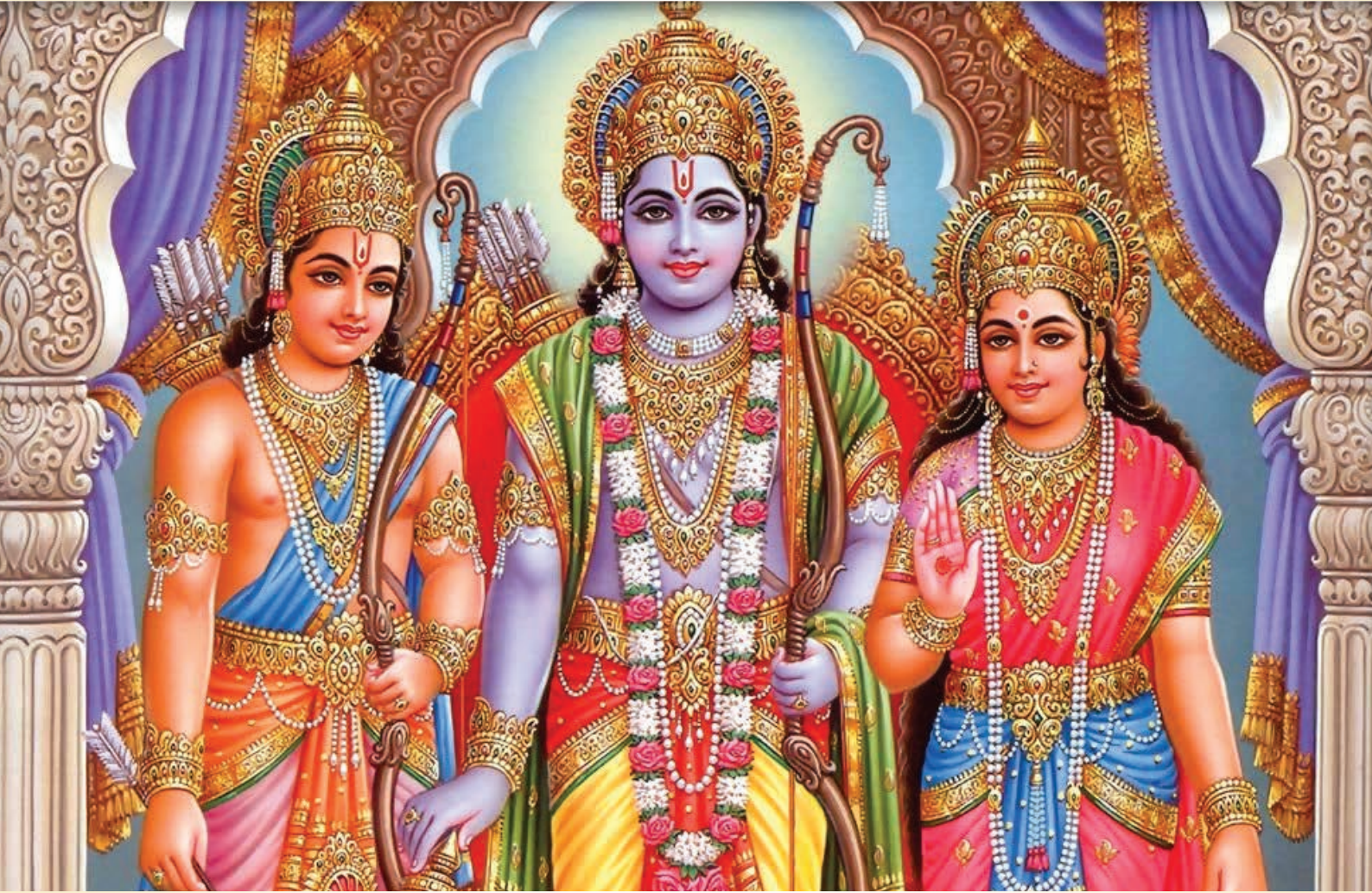




श्री राम मन्दिर चेरिडबल ट्रस्ट
Shri Ram Mandir Charitable Trust
www.shrirammandir.org.nz

Mandir & Community Centre Project
11 Brick St, Henderson, Auckland 0610, New Zealand



**GRAND OPPORTUNITY
TO DONATE AND SERVE SHRI RAM**

SHRI RAM MANDIR CHRONOLOGY

2010

A small group of our citizens identified an acute lack of appropriate public centre for **cultural, social, religious and educational** activities.

2011

SHRI RAM MANDIR CHARITABLE TRUST was formed, with appointment of five Trustees. A site at 11 Brick Street, off Swanson Road, Henderson, Auckland was purchased. A public consultation meeting was held to discuss needs for the centre and preliminary plans were drawn up.

Jul - 2012

BHUMI POOJA

A group of devotees offering 'bricks' at Bhumi Puja



The ground-breaking ceremony (Bhumi Pooja) was held on 21st July at the site of the Mandir and community centre.

A 24-hour **Akhand Hanuman Chalisa Paath** was held at the site. Many Ramayan mandalis, religious organisations and individuals participated.

Feb - 2013

AKHAND HANUMAN CHALISA



Devotees performing havan yagna.



Members of Henderson Sai Centre & Surya Prakash Ramayan Mandali reciting Hanuman Chalisa.

SHRI RAM MANDIR CHRONOLOGY

July - 2013
RAM KATHA

A ten-day Ram Katha was presented by **Swami Nalinanand Giriji Maharaj** between 19 and 28 July.



SHOBHA YATRA

108 devotees held 'Kalash' over their heads during a "shobha yatra" (religious march).



Jan - 2014
LAGHU
RUDRA

The second **Akhand Hanuman Chalisa Paath** and **Homatmak Laghu Rudra and Abhishek** was held between 25 and 27 January. Over 100 sets of Shankh (conch shells) were distributed.



*Abhishek was held on 27 Jan, 2014.
A devotee offering milk.*

*An artists impression of
Shri Ram Mandir when
completed.*

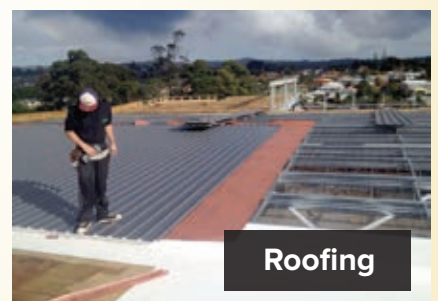
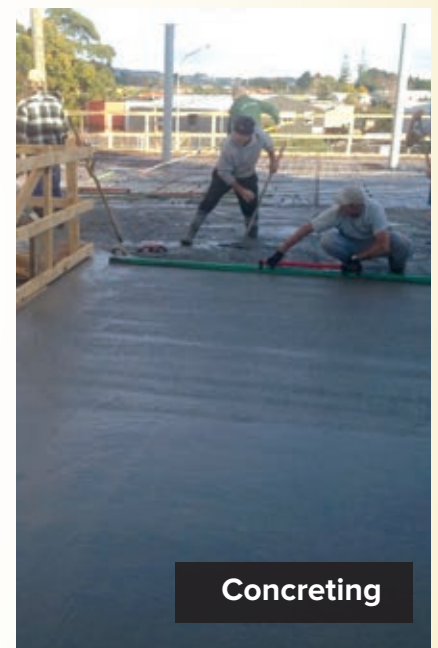


OBJECTIVES OF THE CENTRE

- 1 Shri Ram Mandir (Temple) to provide a place for prayers and meditation.
- 2 Community Centre to be a place for social, cultural and educational activities including inter-faith programmes for all communities.
- 3 To work with existing government services and community institutions to address the general needs of the communities to promote unity in diversity, multi-racial and cross-cultural understanding.

CONSTRUCTION PROGRESS

Work continues steadily at the site and it is hoped before this publication reaches your hand much of the work would have been completed.



TRUSTEES

A set of Trustees who are all professionals in their own right are custodians of Shri Ram Mandir Charitable Trust.

Pravin Kumar	Community worker, Managing Director of Lotus Group of Companies
Giyannendra Prasad	Barrister and Solicitor and former Fiji Parliamentarian
Salendra Kumar	Businessman and Chartered Accountant
Shiu Charan	Community worker, former Fiji School Teacher, Parliamentarian and Trade Unionist

DEITIES IN OUR MANDIR



Shri Ramji



Sita Mata



Laxmanji



Das Hanumanji



Vishnu Narayanji



Laxmiji



Shri Krishna ji



Radha Rani

DEITIES IN OUR MANDIR



Ganpatiji



Gaurishankarji



Durga Mata



Kartikkeyji



Saraswati Mata



Gayatri Mata



Shivling



Parvati Mata



Suryadev



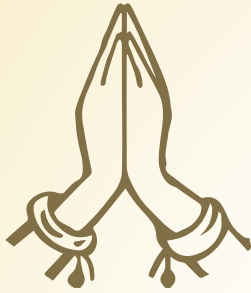
Veer Hanumanji



Lal Hanumanji

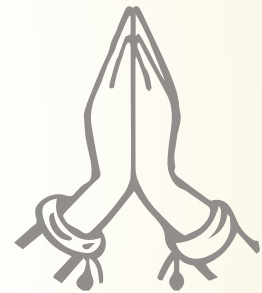


CERTIFICATES FOR FOUNDATION DONORS



GOLD FOUNDATION DONOR

\$10,000+



SILVER FOUNDATION DONOR

\$5,000 - \$ 9999



BRONZE FOUNDATION DONOR

\$1,000 - \$ 4999



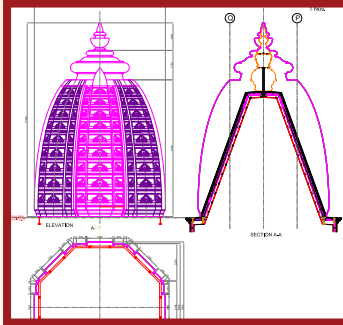
DONATIONS

Shri Ram Mandir Charitable Trust is a registered Charitable Trust and all donations over \$5.00 is tax deductible from Inland Revenue.

COMPONENTS AVAILABLE FOR DONATION



Main Temple with Barrier
(\$135000)



Main Shikhar
(\$95000)



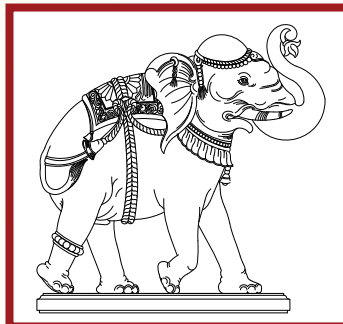
Hanuman Ji Temple
(\$40500)



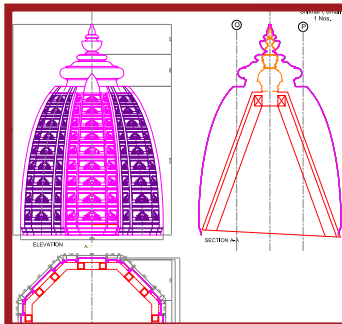
Entrance door with marble surrounding
(\$15,000)



Front Main (marble) Cladding
(\$27200)



Marble Elephant (\$18600)
2 available to donate



Shikhar Small (\$8200 each)
6 available to donate



Marble Panel Artwork (\$6800 each)
6 available to donate



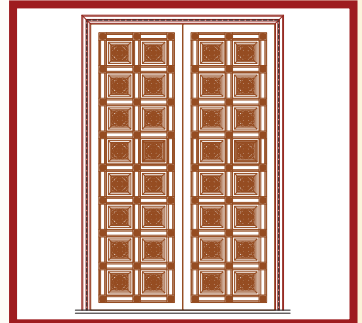
Corner Shikhar (\$4500)
6 available



Small (\$4100) & Big (\$5400) Marble Columns
14 total available to donate



Wooden Surrounding Panel (\$2000)
6 available to donate



Side Doors (\$9000)
4 available to donate

PAYMENT OPTIONS

1 Direct Credit to Bank Account

Bank Account Details

Bank : ASB Bank

Branch : Henderson, Auckland

Account Name : Shri Ram Mandir Charitable Trust

Account Number : 12-3232-0285221-00

All donors must put their name as reference in any direct bank deposits and email us their contact details on info@shrirammandir.org.nz so that we can send you an official receipt.

2 Automatic Payment

This can be arranged with your bank directly. All donors must put their name as reference in any direct bank deposits and email us their contact details on info@shrirammandir.org.nz so that we can send you an official receipt.

3 Cash Donation

- Cash can be given to any Trustee or authorised representative
- At any branch of Lotus Foreign Exchange Ltd (www.lotusfx.com)

4 Cheque Payment

Cheques may be posted to

The Treasurer

Shri Ram Mandir Charitable Trust

Suite 3, Level 7, 300 Queen Street, Auckland 1010

For more details: www.shrirammandir.org.nz